



ROMANIA



DEVA
MUNICIPALITY



DEVA

BUSINESS

Investment opportunities

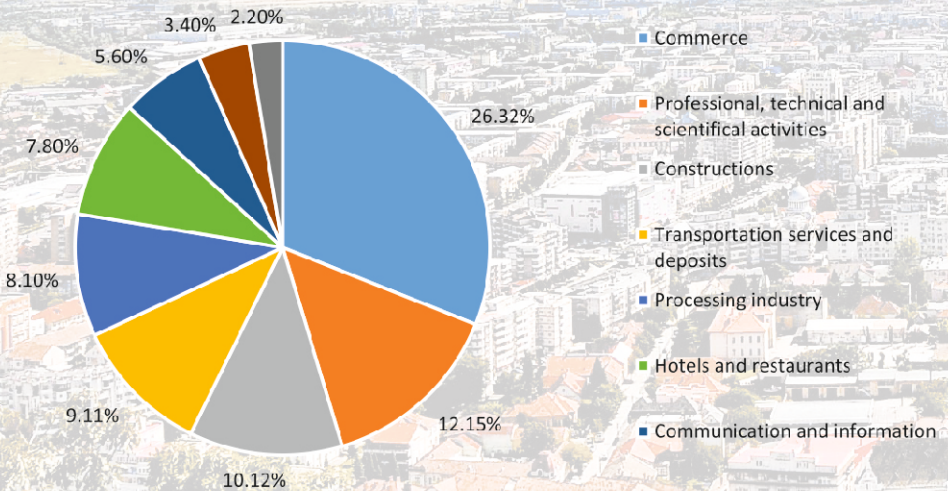
The city of Deva is located in the west part of Romania, the central part of Hunedoara County and on the left bank of the river Mureș. Strategically placed equidistant from other economical centers like Timișoara, Arad or Sibiu, Deva is also crossed by the Pan-European Transport Corridor IV and the A1 Highway.

The **city surface** is 59 km² and the **population** is around 70.000 inhabitants, according to the National Institute of Statistics (2018).

If you take in to account **the other cities and communes** that surround the city of Deva, on an approximately 50 km² area, you have access to a population that reaches around 250.000 inhabitants, this meaning more labor force potential.

4.051 active economic agents are present in Deva, covering the most varied fields of activity.

Local Economy



The Climate is temperate, with average summer values of 21°C and -1°C as an average for the winter season.



DEVA
MUNICIPALITY

DEVA
BUSINESS
www.devabusiness.ro

Access ways:

By road:

- 396 km to Bucharest
- 624 km to Constanța
- 441 km to Budapest
- 677 km to Vienna
- The road distance to Timișoara is 143 km, to Arad 186 km and to Sibiu is 120 km.

By rail:

- 450 km to Bucharest
- 644 km to Constanța
- 425 km to Budapest.

Border points

By road:

- Nădlac - 226 km (with Hungary)
- Vârșand - 197 km (with Hungary)
- Turnu - 198 km (with Hungary)
- Cenad - 222 km (with Hungary)
- Stamora Moravița - 209 km (with Serbia)

By rail:

- Curtici - 166 km (with Serbia)

The nearest international airports:

- Sibiu International Airport (117 km)
- Timișoara "Traian Vuia" International Airport (146 km)



INDUSTRIAL ZONE

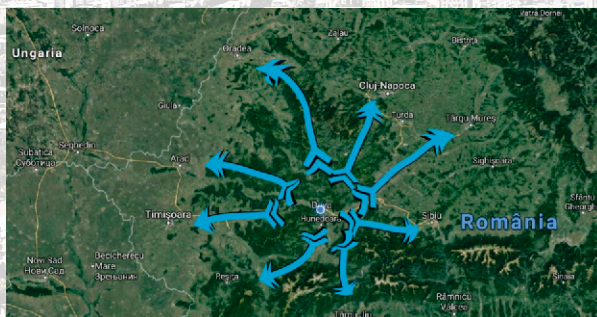
The city has an **Industrial Area** with the following characteristics:

- urban land conditions;
- compact area of about 150 hectares;
- classification already established in the General Urbanistic Plan of the municipality as an area for industrial activities;
- the area has access to all the utilities necessary for industrial activities;
- direct access to road and rail infrastructure.

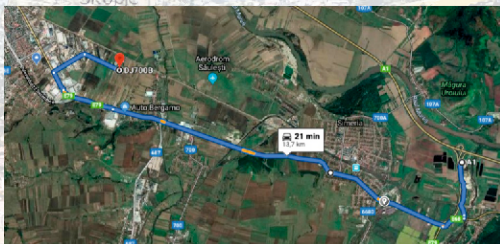


STRATEGIC LOCATION

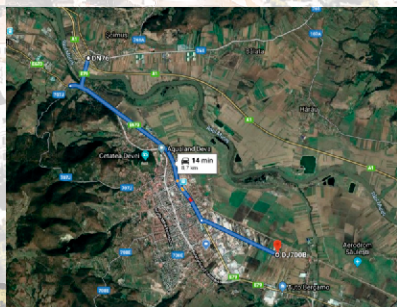
The city of Deva is connected to the Romania A1 Highway and it is crossed by the Pan-European railway Corridor IV, allowing immediate direct access to both national and european routes.



The city of Deva is also positioned in a **strategic location**, at an almost equal distance from the most important urban poles of the region, thus making it a **suitable node for developing logistic centers** that can serve a large area of Romania's territory.



Simeria
A1 Highway Connection Node



Soimuş
A1 Highway Connection Node



Vocational education and longlife learning in Deva

The Municipality of Deva is interested and actively involved in supporting vocational education and longlife learning, together with the local companies, the Hunedoara County School Inspectorate and the **4 educational institutions with a technical profile in Deva**, respectively "Transilvania" Technological High School, Technical Energy College "Dragomir Hurmuzescu", "Grigore Moisil" Technological High School and the Theoretical High School "Teglaş Gabor".

The municipality promotes the professional and dual education to the economic agents that carry out their activity in Deva, but also to the potential investors, all in order to increase the attractiveness to them.

Also, take into consideration our **local fiscal incentive aid scheme**

The tax incentives that may be granted to enterprises that invest in Deva under this minimis aid scheme by Deva Municipality for an initial investment are total tax deductions or deductions from building taxes and land tax depending on the value of the investments made and of the number of new jobs created as a result of the investment, as follows:

- for investments worth **more than 500,000 Euro** equivalent in RON and the creation of at least **25 new jobs** in Deva municipality, as a result of the initial investment, a **30% reduction in building tax** is granted and **full exemption from the payment of land tax on the investment plot;**

- for investments worth **more than 1,000,000 Euro** equivalent in RON and the creation of at least **50 new jobs** in Deva, as a result of the initial investment, a **40% reduction in the tax on buildings** is granted and **full exemption from the payment of land tax on the investment plot;**

- for investments worth **more than 2,000,000 Euro** equivalent in RON and the creation of at least **100 new jobs** in Deva municipality, as a result of the initial investment, a **50% reduction of the tax on buildings** is granted and **full exemption from the payment of land tax on the investment plot;**

- for investments worth **more than EUR 5,000,000 Euro** equivalent in RON and the the creation of at least **200 new jobs** in Deva, as a result of the initial investment, **full exemption from the payment of the building tax** is granted and **full exemption from the payment of land tax on the investment.**



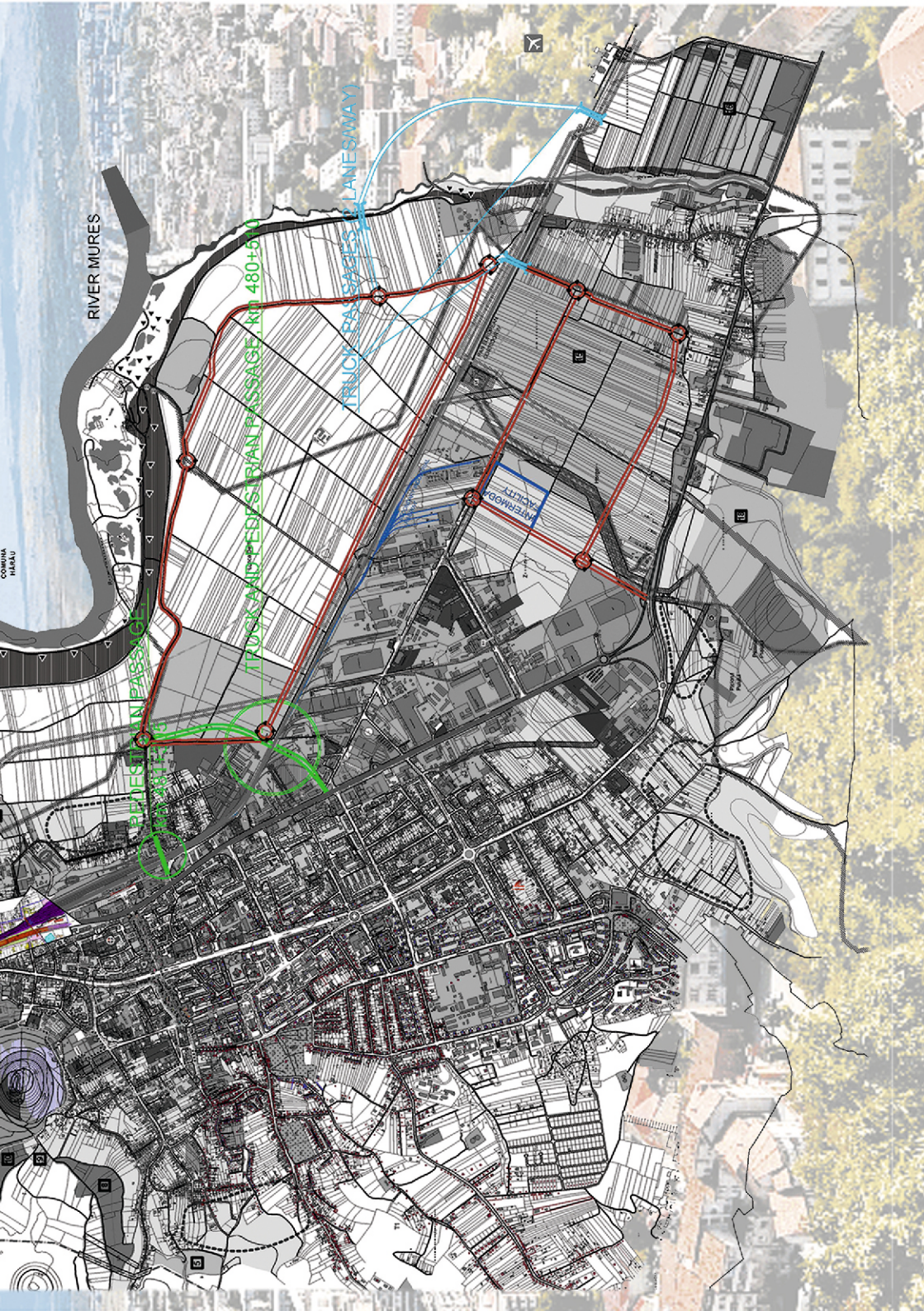
DEVA
MUNICIPALITY

DEVA
BUSINESS
www.devabusiness.ro

Urban development perspectives

- DESIGN PASSAGE APPROVED BY THE LOCAL COUNCIL
- PASSAGES UNDER CONSTRUCTION
- CAR PASSAGES PROPOSED FOR AREA DEVELOPMENT
- ROUNDABOUT PROPOSED FOR AREA DEVELOPMENT
- PROPOSED ROAD INFRASTRUCTURE
- INTERMODAL FACILITY PROPOSED FOR AREA DEVELOPMENT
- SECONDARY INDUSTRIAL RAILWAY





RIVER MURES

PEDESTRIAN PASSAGE (KI 480+60)

BICYCLE PASSAGE (KI 480+60)

TRUCK AND PEDESTRIAN PASSAGE (KI 480+60)

TRUCK PASSAGES (LANEWAY)

TRUCK AND PEDESTRIAN PASSAGE (KI 480+60)

CONTRAST
PLAN

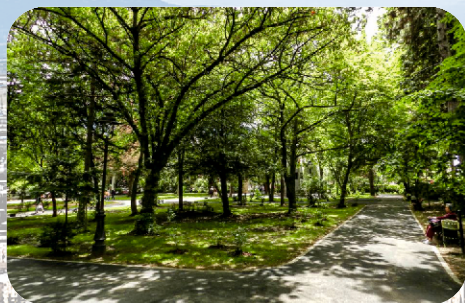


Museum of Dacian and Roman Civilization Fortress Municipal Park

Magna Curia or Bethlen Castle is located at the foot of the fortress hill, near the Municipal Park. It is the oldest historical monument building in Deva. At this moment, in the castle it is located the *Museum of Dacian and Roman Civilization*.

The main pieces of the museum's patrimony are constituted in prehistoric collections, Dacian, Roman, early medieval, medieval, a collection of various firearms, modern and contemporary military equipment, collections with pieces of modern and contemporary history.

Located in the historical center of Deva, at the foot of the Fortress hill, the "*Fortress Municipal Park*" is one of the oldest and appreciated leisure areas in Deva.



**MUZEUL
CIVILIZATIEI
DACICE SI ROMANE
DEVA**

Deva, the City of Gymnasts

Deva is the place from which the best **gymnasts** of Romania have embarked on their journey into the world to win gold medals

The gymnasium school in Deva was established in 1978, after the Montreal Olympics. The balance of the over 30 years since Deva trains the world's best gyms is impressive: 25 Olympic medals, 36 medals at the World Championships, 48 at the European Championships, 42 at the Balkan Championships and over 500 national titles.

In 2008, the "Gymnasts' Alley" was inaugurated, where the busts of four of the trainers of the Romanian gymnastics group were located, as well as the busts that represent 11 of the best gymnasts in Romania. (Nadia Comăneci, Ecaterina Szabo, Lavinia Agache, Daniela Silivaş, Monica Roşu, Andreea Răducan, Simona Amânar, Maria Olaru, Daniela Şofronie, Gina Gogean, Lavinia Miloşovici). The ensemble of statues is located in the area of the Olympic Gymnasium Hall (created by the artist Ioan Seu).





The *Fortress of Deva* is considered one of the most important medieval fortifications in Transylvania. Over 250,000 people come every year to find out the fascinating story and enjoy the view of the city of Deva, seen from above from the volcanic cone on which the city is built.

Exhibitions and history lessons, guided tours and even an electronic music festival are just a few of the events through which the Deva Fortress tries to convince tourists to visit it.

Access is by foot or by cable car.





DEVA
MUNICIPALITY

DEVA
BUSINESS
www.devabusiness.ro

Aqualand Deva – 2.000 cubic meters of fun



Aqualand Deva has seven swimming pools of different sizes and depths, wave generating facility as well: relaxation space, sunbeds and heated floor, Tunisian sauna, relaxation sauna, Finnish sauna, infrared sauna, infrared sauna - melotherapy, infra-romatherapy sauna, salt cave, slides, gym / fitness room.

Musical Fountain



How can we help:

- The municipality is ready to respond promptly to any request regarding the necessary access infrastructure, access to public utilities, the timeliness of the necessary documentation or advice, preliminary or final, tax incentives for new investments, human resources available on the m
- We can coordinate and seek the assistance of other government units and public organizations to support the development of new or existing local investments.

Services offered:

- Providing general information on the legislative framework, investment climate, potential locations and sectors of interest in the municipality of Deva;
- Main interface between investors and the municipality, in the areas of interest;
- Supporting companies that intend to enter the local market or develop already operational production capacities;
- Support in identifying local resources needed for investment and potential suppliers;
- Assistance services in the implementation of projects throughout the decision-making process;
- Providing assistance to investors in selecting locations and identifying potential local partners;
- Post-implementation services for investment projects.





For more information you can find us at:

DEVA MUNICIPALITY

Unirii Square no. 4, RO – 330152 Deva, Hunedoara County

tel: +40 254 21 85 79, fax: +40 254 22 61 76

e-mail: primar@primariadeva.ro ;

web site: www.primariadeva.ro

THE INVESTORS AND FOREIGN AFFAIRS OFFICE

Unirii Square no. 16, RO – 330152 Deva, Hunedoara County

tel: +40 254 23 54 87, fax: +40 254 23 54 88

e-mail: birou.investitori@primariadeva.ro ;

web site: www.devabusiness.ro



THE INVESTORS AND FOREIGN
AFFAIRS OFFICE

INDUSTRIAL AREA

REDUCED
TAXES

BUSINESS
MODELS

BUSINESS CONTACTS

DEVA BUSINESS

LOCAL ADMINISTRATION
SUPPORT

FISCAL INCENTIVES
FOR NEW
INVESTMENTS

DIVERSIFIED
ECONOMY

DUAL LEARNING

LABOR FORCE